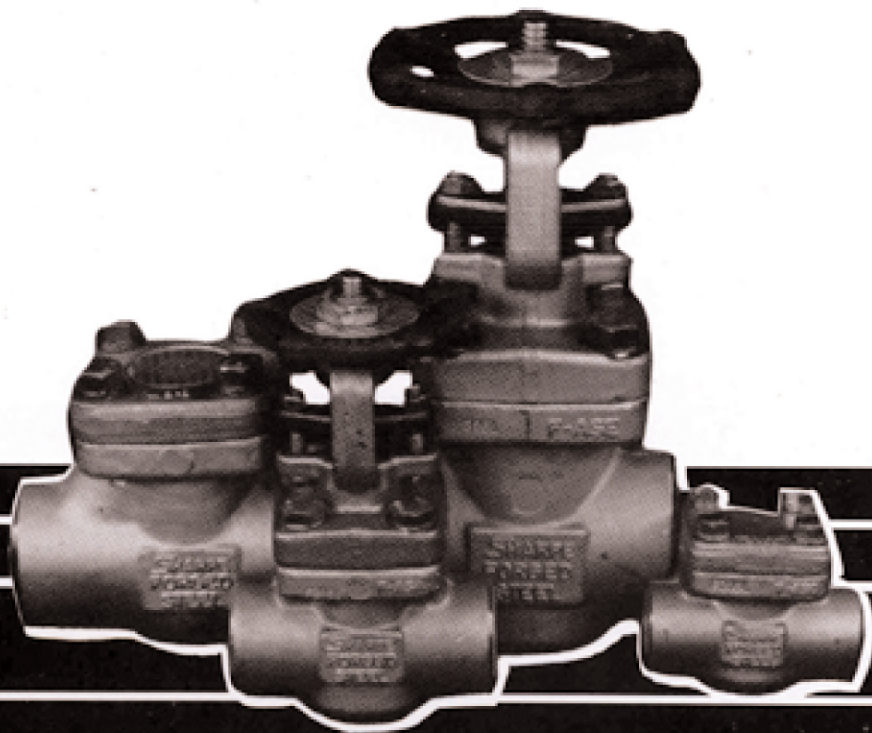


# **SHARPE® VALVES**



**FORGED STEEL VALVES**

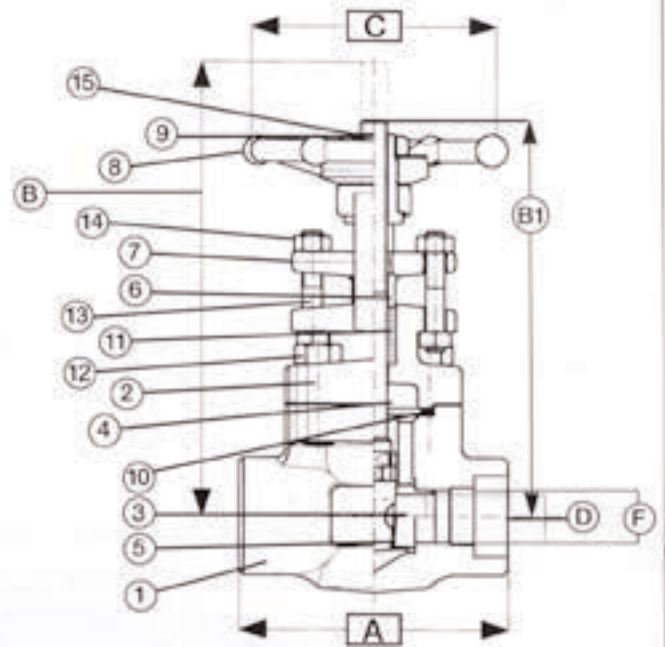
# SHARPE VALVES

## FORGED STEEL GATE VALVE

**CLASS 800  
ASTM A105  
BOLTED BONNET  
THREADED OR SOCKET WELD**

FIG. 34834

PART	NAME	MATERIAL
1	BODY	ASTM A105
2	BONNET	ASTM A105
3	WEDGE	ASTM A182/F6a
4	STEM	ASTM A182/F6a
5	SEATS	ASTM A182/F6a STELLITED
6	PACKING GLAND	AISI 316
7	GLAND FLANGE	ASTM A105
8	HANDWHEEL	CARBON STEEL
9	HANDWHEEL NUT	CARBON STEEL
10	GASKET SPIRAL WOUND	AISI 316 + GRAPHITE
11	PACKING	PREFORMED GRAPHITE
12	BONNET BOLT	ASTM A193/GR B8
13	GLAND STUDS	AISI 410
14	GLAND NUTS	ASTM A194/2H
15	NAME PLATE	ALUMINUM



APPLICABLE STANDARDS	
BASIC DESIGN	API 602 BS 5352
SOCKET WELD	ANSI B16.11
THREADED	ANSI B120.1
TEST	API 598 BS 5146

SIZE	DIMENSIONS IN INCHES					
	1/2	3/4	1	1 1/4	1 1/2	2
A	3.15	3.54	4.33	5.00	5.00	5.12
B	5.70	6.14	7.32	8.50	10.04	10.75
C	3.54	3.54	4.33	4.72	5.51	5.51
D	0.39	0.55	0.71	0.94	1.22	1.44
B1	5.12	5.39	6.38	7.36	8.62	9.06
F <sub>THRD</sub>	14.0	14.0	11.5	11.5	11.5	11.5
F <sub>SW</sub>	0.85	1.07	1.33	1.68	1.91	2.41

SIZE	CV*	WEIGHT (LBS) <sup>†</sup>
1/2	5.8	3.7
3/4	10.2	4.6
1	26.4	7.5
1 1/4	41.8	11.7
1 1/2	67	15.6
2	102	20.5

\*CV-The volume of water in GL/MIN that will pass through a given valve with a pressure drop of 1PSI.  
<sup>†</sup>Weight includes packing and gasket.



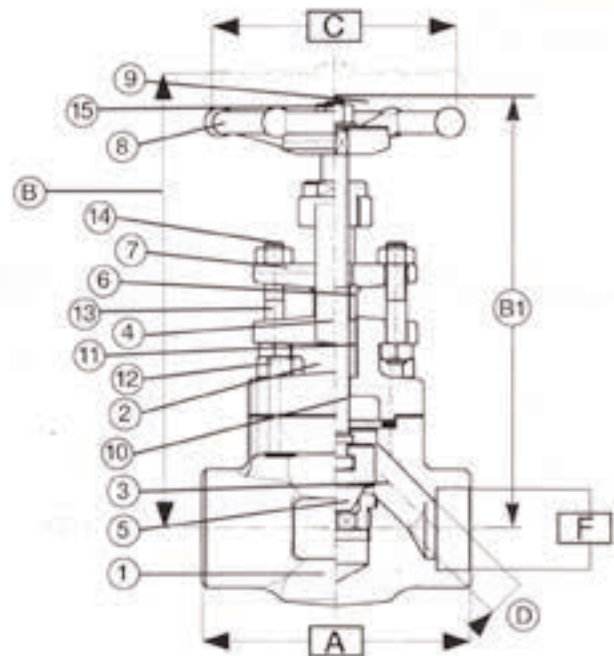
# SHARPE® VALVES

## FORGED STEEL GLOBE VALVE

**CLASS 800  
ASTM A105  
BOLTED BONNET  
THREADED OR SOCKET WELD**

**FIG. 44834**

PART	NAME	MATERIAL
1	BODY	ASTM A105
2	BONNET	ASTM A105
3	DISC	ASTM A182/F6a
4	STEM	ASTM A182/F6a
5	SEATS	ASTM A182/F6a STELLITED
6	PACKING GLAND	AISI 316
7	GLAND FLANGE	ASTM A105
8	HANDWHEEL	CARBON STEEL
9	HANDWHEEL NUT	CARBON STEEL
10	GASKET SPIRAL WOUND	AISI 316 + GRAPHITE
11	PACKING	PREFORMED GRAPHITE
12	BONNET BOLT	ASTM A193B7
13	GLAND STUDS	AISI 410
14	GLAND NUTS	ASTM A194/2H
15	NAME PLATE	ALUMINUM



### APPLICABLE STANDARDS

BASIC DESIGN	BS 5352
SOCKET WELD	ANSI B16.11
THREADED	ANSI B120.1
TEST	BS 5146

SIZE	DIMENSIONS IN INCHES					
	1/2	3/4	1	1 1/4	1 1/2	2
A	3.15	3.54	4.33	5.00	6.10	6.69
B	5.98	6.26	7.17	8.43	11.14	12.05
B1	5.51	5.71	6.54	7.56	10.12	10.94
C	3.54	3.54	4.33	4.72	5.51	5.51
D	0.35	0.47	0.69	0.89	0.98	1.18
F THRD	14.0	14.0	11.5	11.5	11.5	11.5
F SW	0.85	1.07	1.33	1.68	1.91	2.41

SIZE	CV*	WEIGHT (LBS)
1/2	1.4	3.7
3/4	3.8	4.4
1	7	7.0
1 1/4	10.2	11.7
1 1/2	17.8	17.2
2	22	23.3

\*CV-The volume of water in G/L/MIN that will pass through a given valve with a pressure drop of 1PSI.

# SHARPE VALVES

## FORGED STEEL CHECK VALVES

**CLASS 800**  
**ASTM A105**  
**BOLTED COVER**  
**THREADED OR SOCKET WELD**

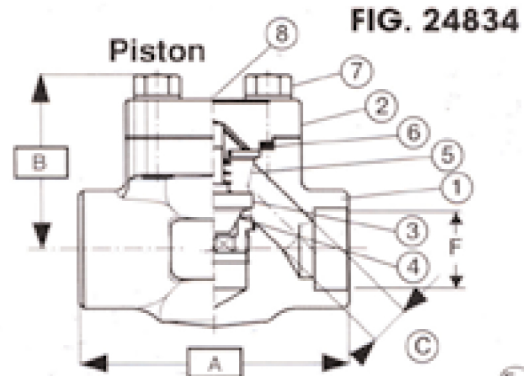
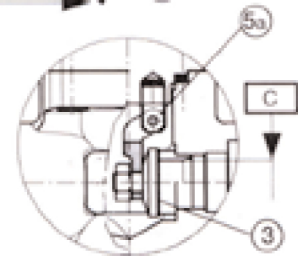


FIG. 24834/SC



PART	NAME	MATERIAL
1	BODY	ASTM A105
2	COVER	ASTM A105
3	PISTON/DISC	ASTM A182/F6a
4	SEAT	ASTM A182/F6a STELLITED
5	SPRING	STAINLESS STEEL 316
5a	SWING HINGE	ASTM A182/F6-F1316
6	GASKET SPIRAL WOUND	AISI 316 + GRAPHITE
7	BOLT	A193B
8	NAME PLATE	ALUMINUM

APPLICABLE STANDARDS	
BASIC DESIGN	BS 5352
SOCKET WELD	ANSI 16.11
THREADED	ANSI B120.1
TEST	BS 5146

SIZE	DIMENSIONS IN INCHES					
	1/2	3/4	1	1 1/4	1 1/2	2
A	3.15	3.54	4.33	5.	6.10	6.69
B	1.89	2.01	2.48	2.80	3.39	3.90
C	0.35	0.47	0.69	0.89	0.98	1.18
F THRD.	14.0	14.0	11.5	11.5	11.5	11.5
F SW	0.85	1.07	1.33	1.68	1.91	2.41

SIZE	CHECK CV*	PISTON CV*	WEIGHT (LBS)
1/2	3.4	1.2	2.4
3/4	7	3.2	4.0
1	14.2	5.8	5.7
1 1/4	20.4	9.1	7.9
1 1/2	30.2	13	12.1
2	56.2	17	18.5

\*CV-The volume of water in GPM that will pass through a given valve with a pressure drop of 1PSI.

# SHARPE VALVES

A Division of Smith-Cooper International, LLC

**Toll Free: 1-877-7SHARPE**  
**(877) 774-2773**

Fax: (708) 562-9250

Email: info@sharpevalves.com

www.sharpevalves.com

1260 Garnet Drive

Northlake, Illinois 60164 U.S.A.